

RETAIL SPACES FOR LEASE
OVERBROOK PLAZA SHOPPING CENTER
5907 & 5911 JFK BOULEVARD
NORTH LITTLE ROCK, ARKANSAS

INFORMATION

- Space Sizes : 1,500 square feet for each bay or combined for 3,000 square feet
- Parking Ratio: 6.1 per 1,000 sf
- Property located on main artery - JFK Blvd.
- Monument sign with tenant directory
- Daily Traffic: 26,000 on JFK Blvd.
- C-3 Zoning

LEASE TERMS

- Rent: Negotiable depending on lease term and other factors
- CAM/Taxes/Insurance: water & sewer, trash removal included
- Tenant Finish allowance from Landlord is negotiable

CONTACT INFORMATION

Michael Friedrichsmeyer

Email: friedrichsmeyer@metrorealty.cc

Todd Dachenhausen

Email: todd@metrorealty.cc

Metropolitan Realty & Development, LLC

P.O. Box 6500

Sherwood, Arkansas 72124

501.835.7500

Website: www.metrorealty.cc



Information provided in the brochure is deemed to be reliable, however, Metropolitan Realty & Development, LLC makes no warranty to its accuracy.



Storefronts

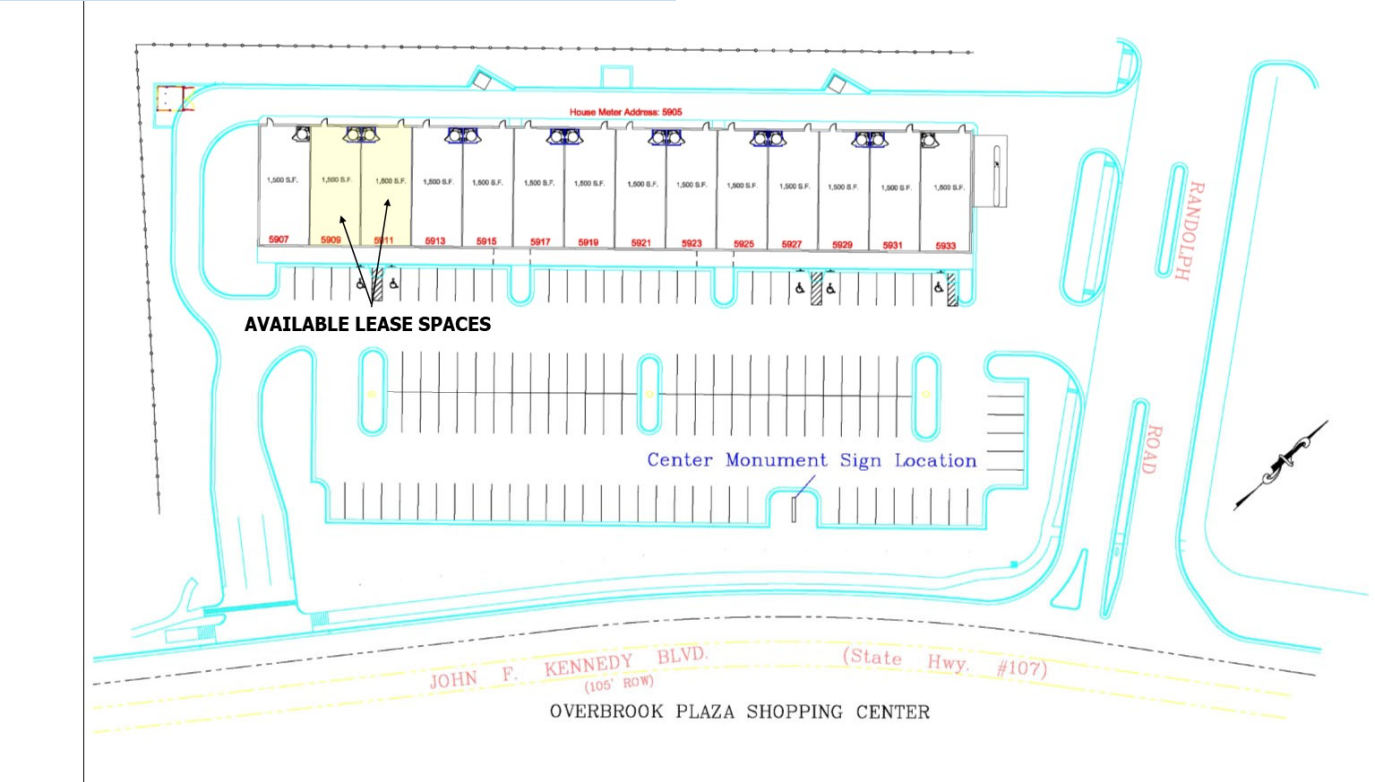


5909 & 5911 Interior looking toward front of space

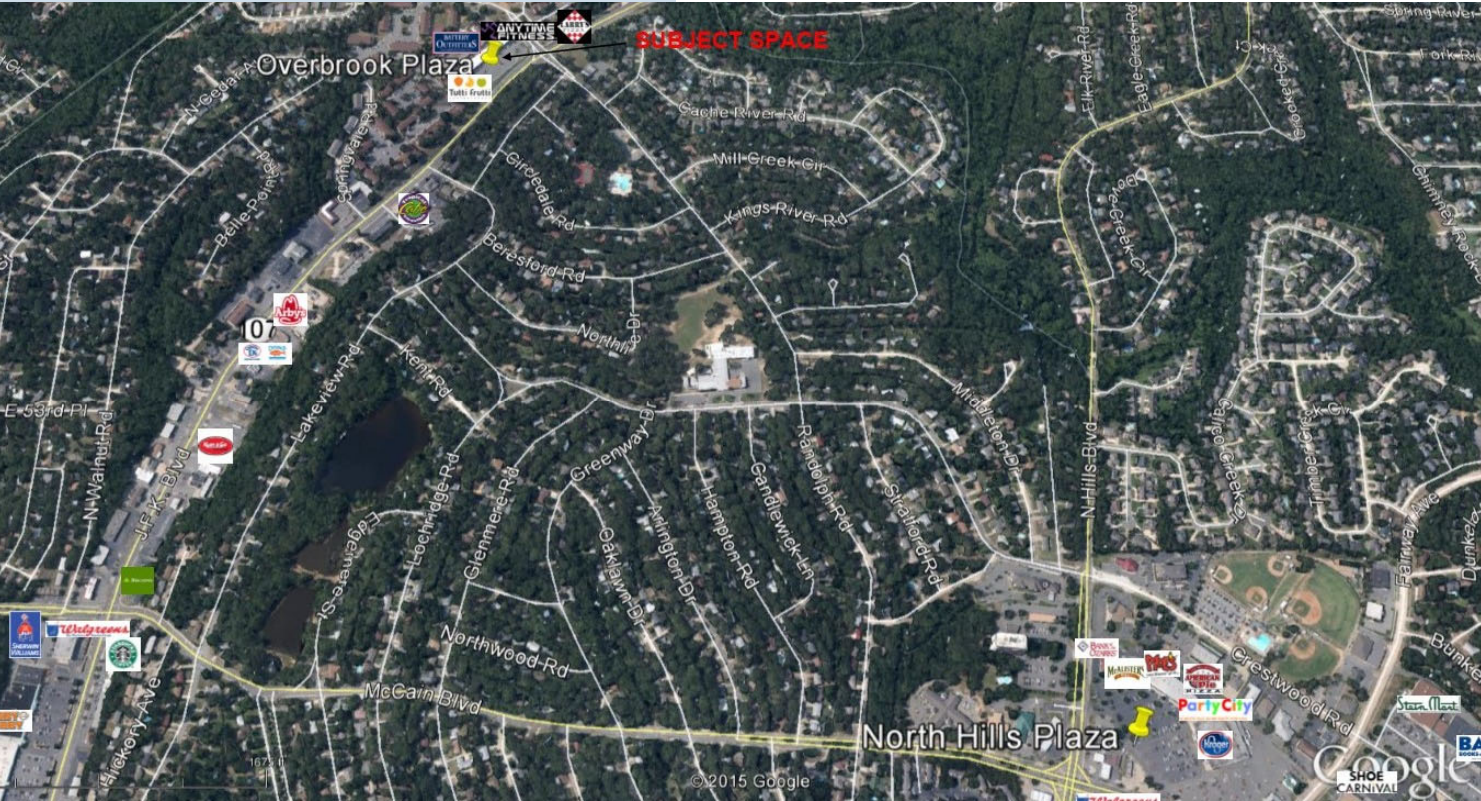


5925 Interior looking toward front of space

SHOPPING CENTER SITE MAP



SURROUNDING AREA



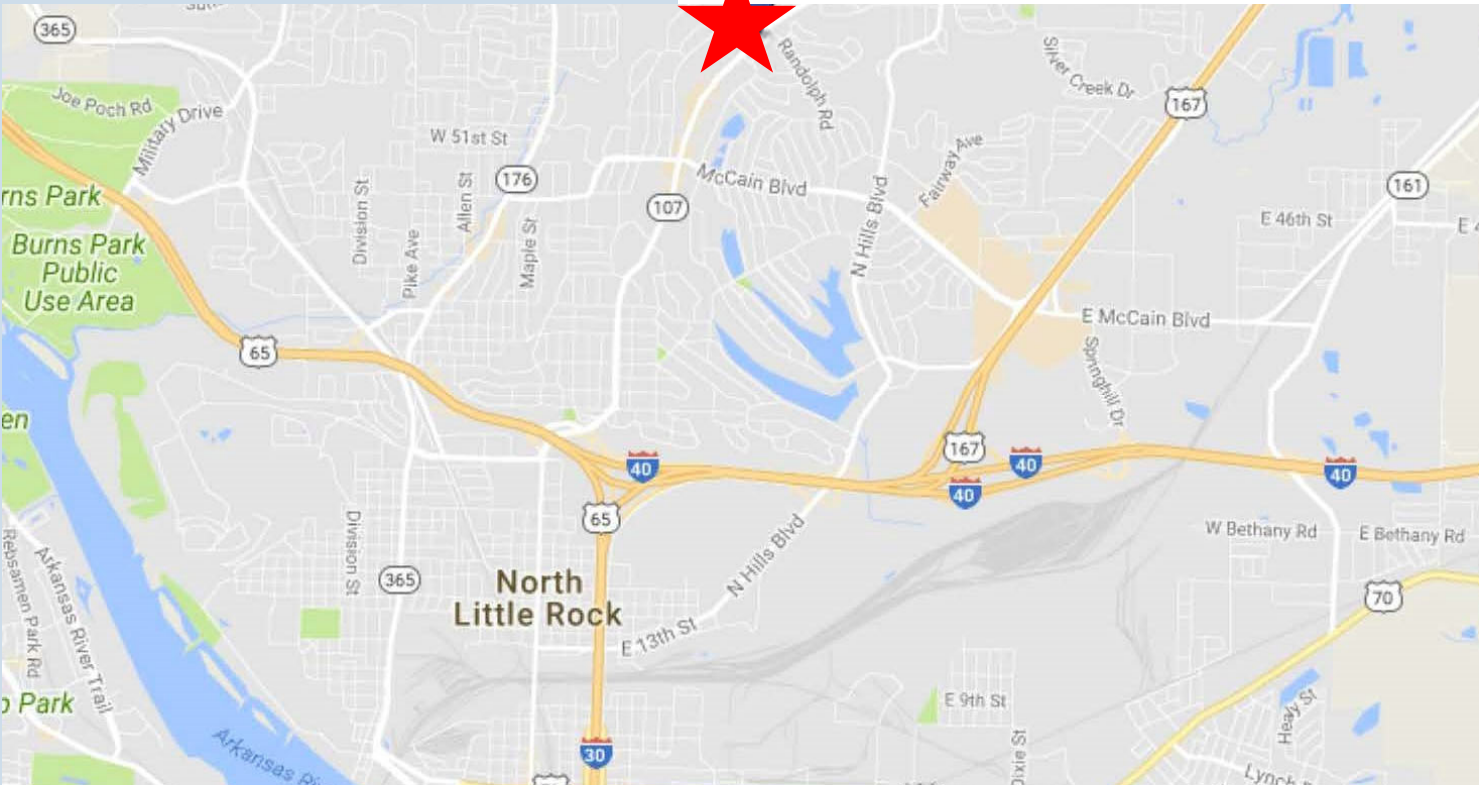
SHOPPING CENTER TENANTS



SHOPPING CENTER TENANTS



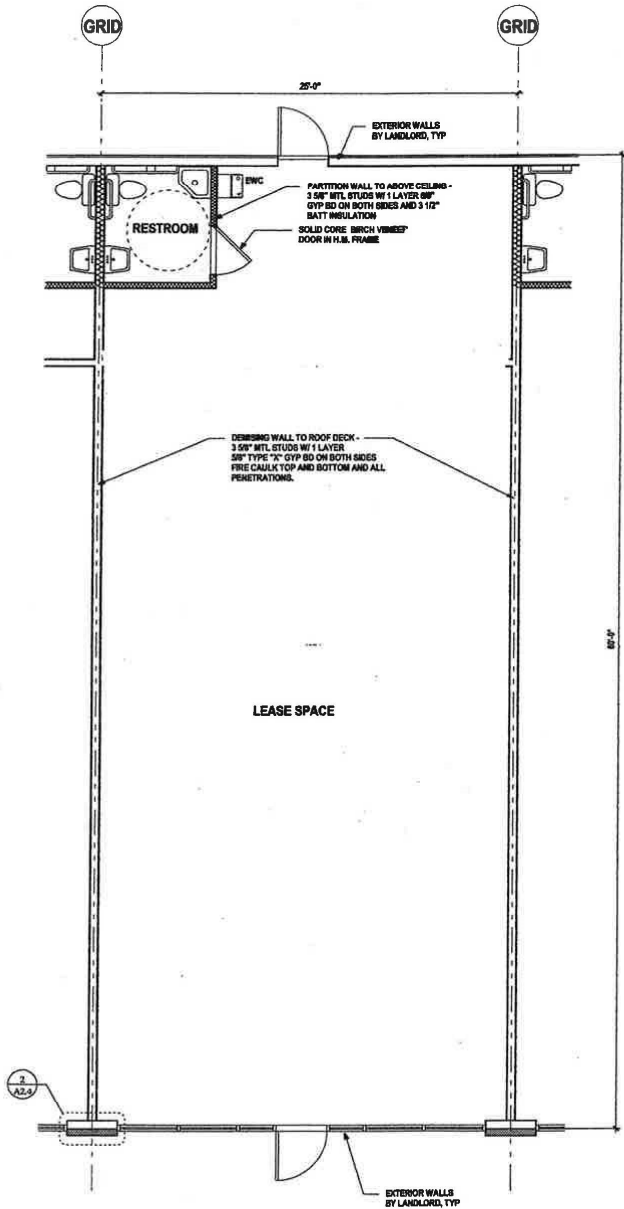
SHOPPING CENTER LOCATION MAP



DEMOGRAPHICS

Population	One Mile	Three Miles	Five Miles
2018	11,643	55,433	97,742
2023	11,592	55,538	98,517
Growth 2018 - 2023	(0.44%)	0.19%	0.79%
Average Age	41.40	39.70	38.90
Households 2018	5,043	23,501	42,033
Growth 2018 - 2023	(0.50%)	0.13%	0.80%
Median Household Income	\$59,411	\$50,728	\$46,641
Average Household Size	2.3	2.3	2.3
2017 Average HH Vehicles	2.0	2.0	2.0
Median Home Value	\$166,068	\$148,441	\$147,731
Median Year Built	1973	1972	1973

TYPICAL FLOORPLAN - 1,500 SF



1 TYPICAL FLOOR PLAN
SCALE: 1/4" = 1'-0"



WILLIAMS & DEAN ASSOCIATED ARCHITECTS

EIGHTEEN
CORPORATE HILL DRIVE
LITTLE ROCK, AR 72205
P 501-224-1900
F 501-224-0873
WWW.WILLIAMSDEAN.COM



General Contractor
Construction Manager
Financial Building Solutions
208 North Beech Street
North Little Rock, AR 72114
(501) 371-0255
FAX (501) 371-0020

OVERBROOK SHOPPING CENTER
NORTH LITTLE ROCK, ARKANSAS

SHEET TITLE	
TYPICAL TENANT FINISH OUT	
REVISION:	DATE
△	
△	
7 AUG 07	ISSUE DATE
06-002	PROJECT NUMBER
SHEET NUMBER	

A1.2